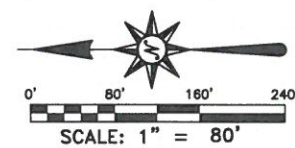
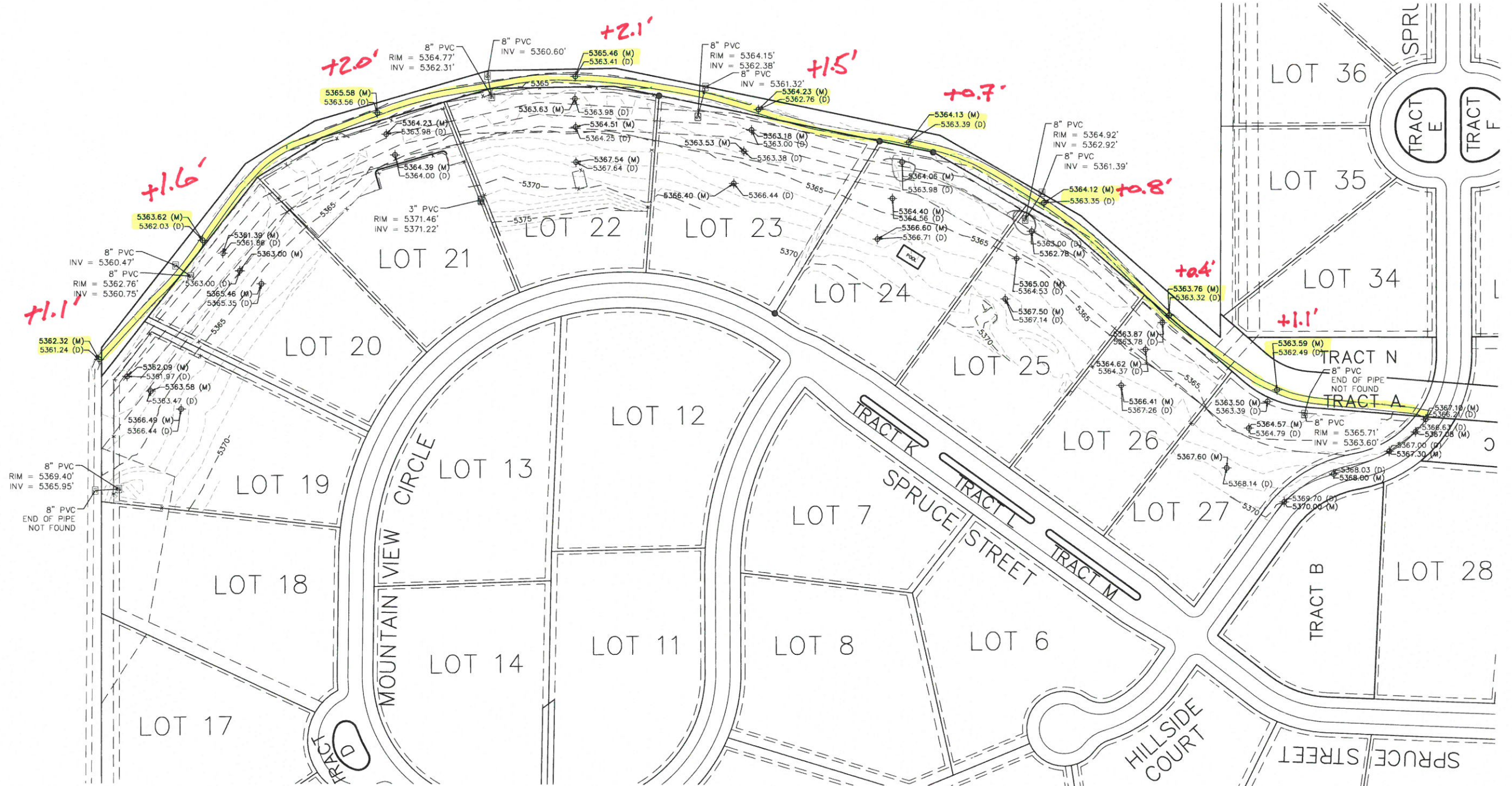


# TOPOGRAPHIC SURVEY EXHIBIT

A PORTION OF LOTS 19-27, SPRUCE MEADOWS FILING NO. 1  
 LOCATED IN THE SOUTHEAST QUARTER OF SECTION 8 AND THE NORTHEAST QUARTER OF SECTION  
 17, T1S, R68W, OF THE 6TH PM, CITY AND COUNTY OF BROOMFIELD, STATE OF COLORADO



LEGEND	
⊕	SPOT ELEVATION
(D)	DESIGN ELEVATION
(M)	MEASURED ELEVATION
⊗	STORM DRAIN INLET
●	FOUND MONUMENT
---	LOT LINE
---	EASEMENT
---	CURB AND GUTTER LINE
---	EDGE OF PAVEMENT
---	1' CONTOUR LINE
---	5' CONTOUR LINE
---	FENCE

**BENCHMARK:**  
 CITY AND COUNTY OF BROOMFIELD GPS No. 32, A STANDARD BROOMFIELD MARK ON A STEEL ROD SET IN A RANGE BOX LOCATED ON SHERIDAN PKWY 0.8 MILES SOUTH-SOUTHWEST OF THE INTERSECTION OF NORTHWEST PKWY. AND SHERIDAN PKWY. 50.9FT NORTHWEST OF SHERIDAN CENTERLINE. ELEVATION = 5362.076 FEET (NAVD88).

**ATWELL**  
 866.850.4200 www.atwell-group.com  
 143 UNION BOULEVARD, SUITE 700  
 LAKEWOOD, CO 80228  
 303.462.1100

REVISIONS	SHEET
	1
	OF 1
	File No.
	Date Drawn 06/15/2016
	Drawn By CFP
	Checked By JBR
	Job No. 16001350